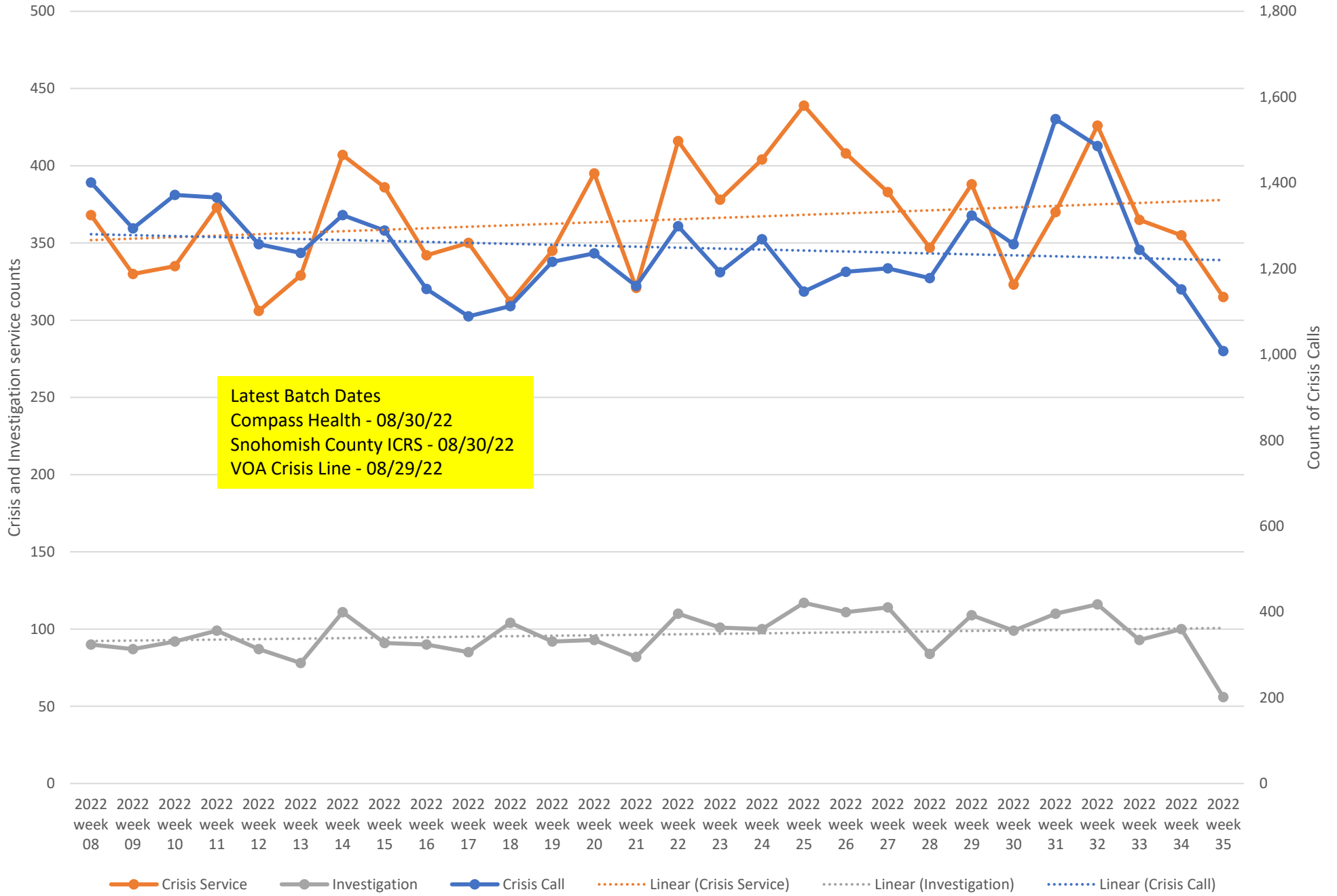




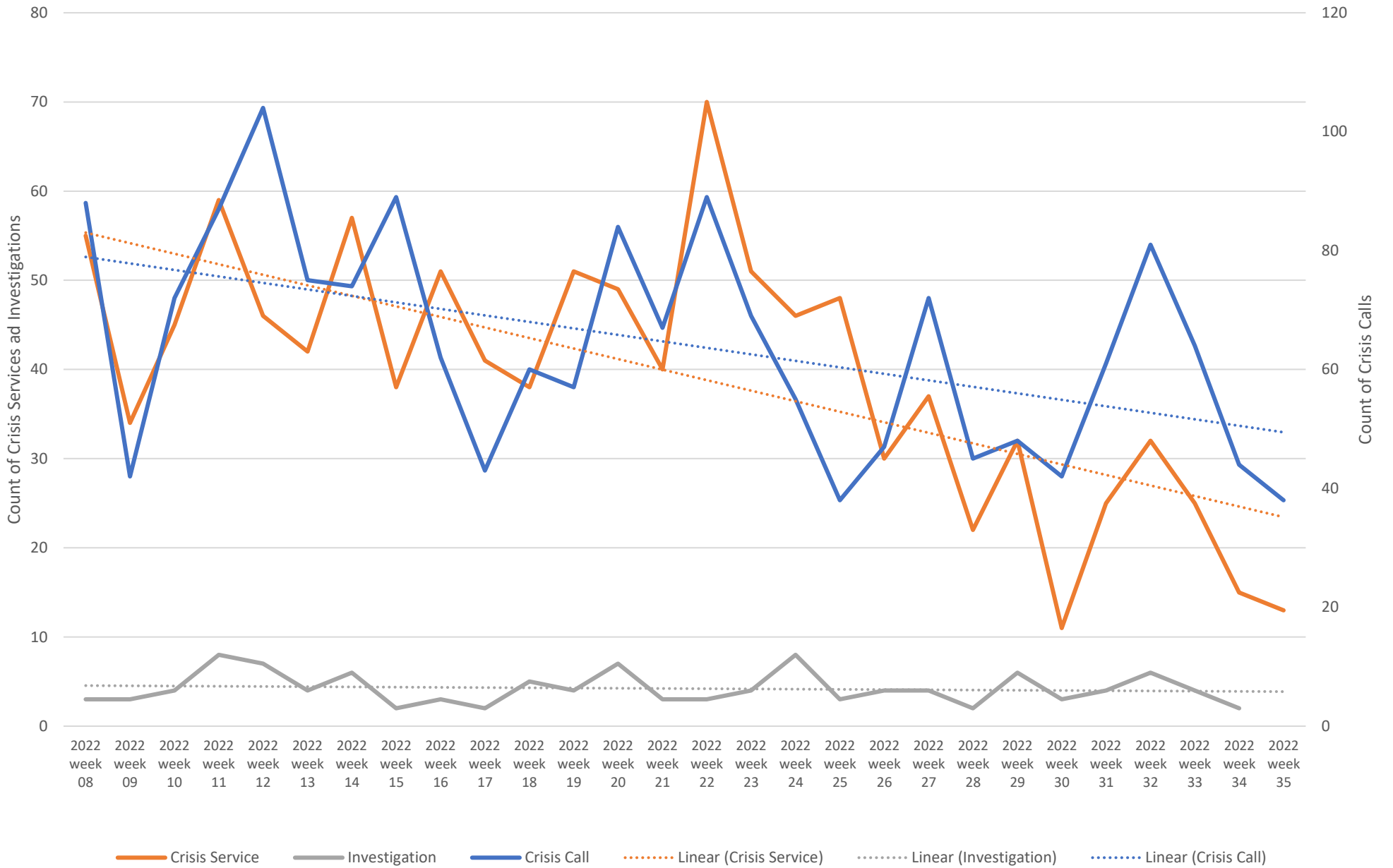
Weekly Crisis Capacity Indicator Snapshot

Page 2	Crisis Data - dates 02/13/22 to 08/27/22
Page 3	Crisis Data: Ages 0-17 - dates 02/13/22 to 08/27/22
Page 4	All DCR Dispatches - dates 02/13/22 to 08/27/22
Page 5	Weekly Staff Count - Staff providing Crisis or Investigation services 02/13/22 to 08/27/22
Page 6	Hospital placement locations (Invol and Vol) - No adjustment has been made for timely data - recent weeks likely low
Page 7	Telehealth only, crisis and investigation services from 02/13/22 to 08/27/22
Page 8	Crisis Service Unit Percent - Crisis Service units divided by Crisis units + Investigation units
Page 9	Washington State Indicators of Anxiety or Depression Based on Reported Frequency of Symptoms During Last 7 Days
Page 10	Place of Service -Crisis Services, percent of total by week
Page 11	Place of Service -Investigations, percent of total by week
Page 12	New COVID-19 Cases Reported Weekly per 100,000 population - 05/27/21 to 08/31/22
Page 13	Total Hospitalized Adults - COVID-19 (confirmed or suspected) 7 day average
Page 14	North Sound BH ASO Walkaway Chart 02/13/22 to 08/27/22

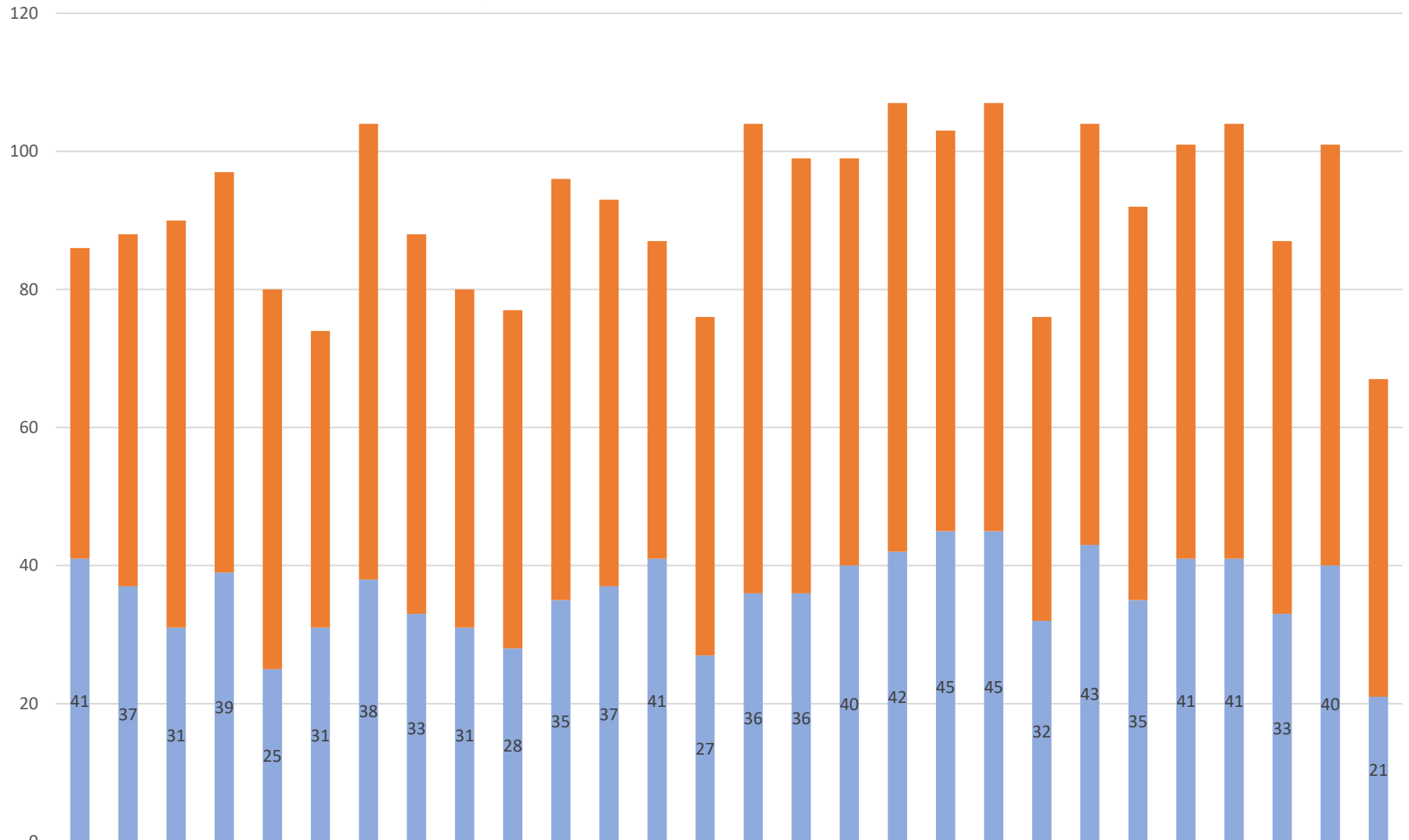
Crisis Data - dates 02/13/22 to 08/27/22



Crisis Data: Ages 0-17 - dates 02/13/22 to 08/27/22

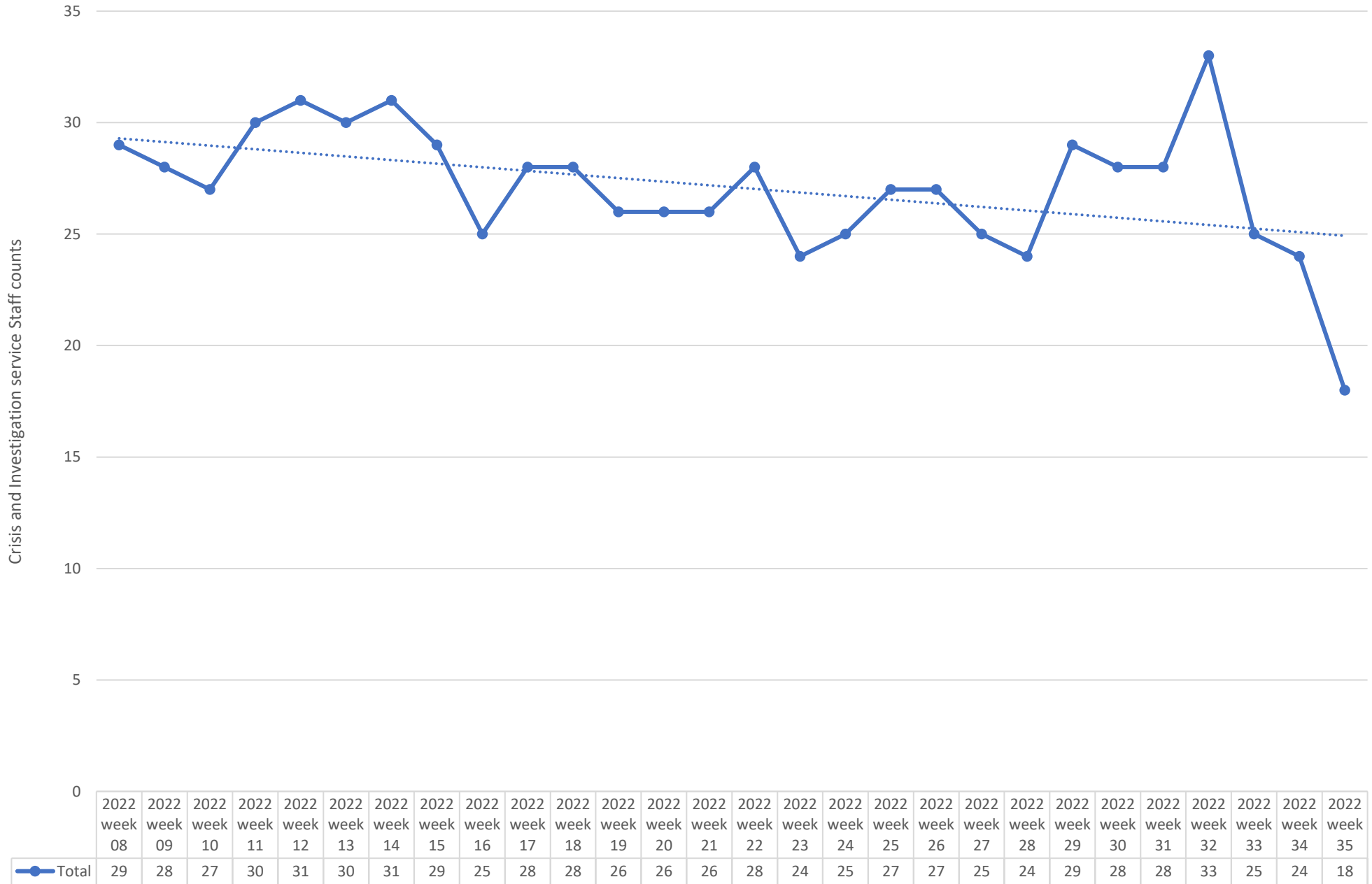


All DCR Dispatches - dates 02/13/22 to 08/27/22



	2022 week 08	2022 week 09	2022 week 10	2022 week 11	2022 week 12	2022 week 13	2022 week 14	2022 week 15	2022 week 16	2022 week 17	2022 week 18	2022 week 19	2022 week 20	2022 week 21	2022 week 22	2022 week 23	2022 week 24	2022 week 25	2022 week 26	2022 week 27	2022 week 28	2022 week 29	2022 week 30	2022 week 31	2022 week 32	2022 week 33	2022 week 34	2022 week 35
dispatch resulting in other outcome	45	51	59	58	55	43	66	55	49	49	61	56	46	49	68	63	59	65	58	62	44	61	57	60	63	54	61	46
dispatch resulting in detention	41	37	31	39	25	31	38	33	31	28	35	37	41	27	36	36	40	42	45	45	32	43	35	41	41	33	40	21

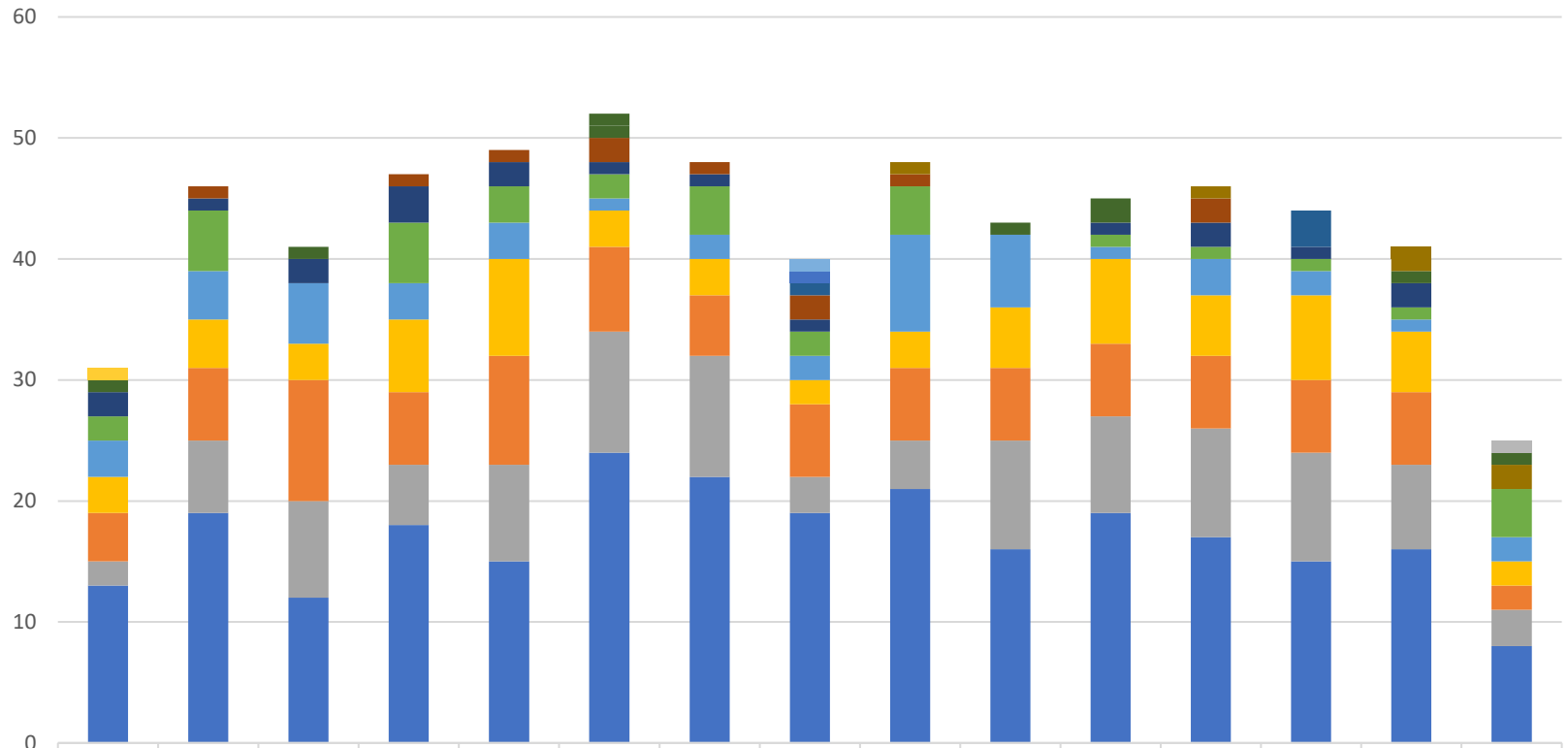
Weekly Staff Count - Staff providing Crisis or Investigation services 02/13/22 to 08/27/22



2022 week 35 ending 01/00/00

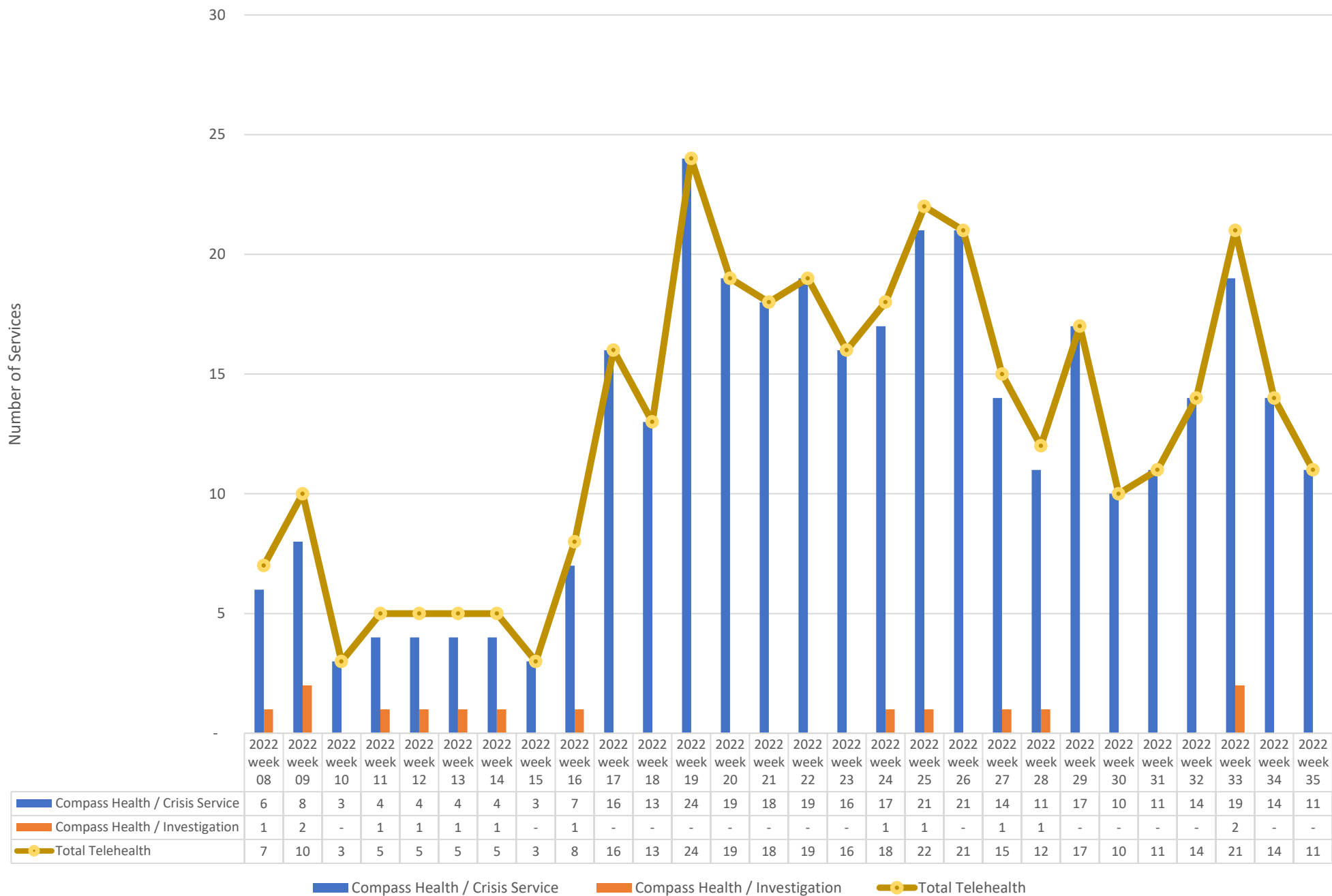
Hospital placement locations (Invol and Vol) - No adjustment has been made for timely data - recent weeks likely low

Count of hospital placement locations in the dispatch record

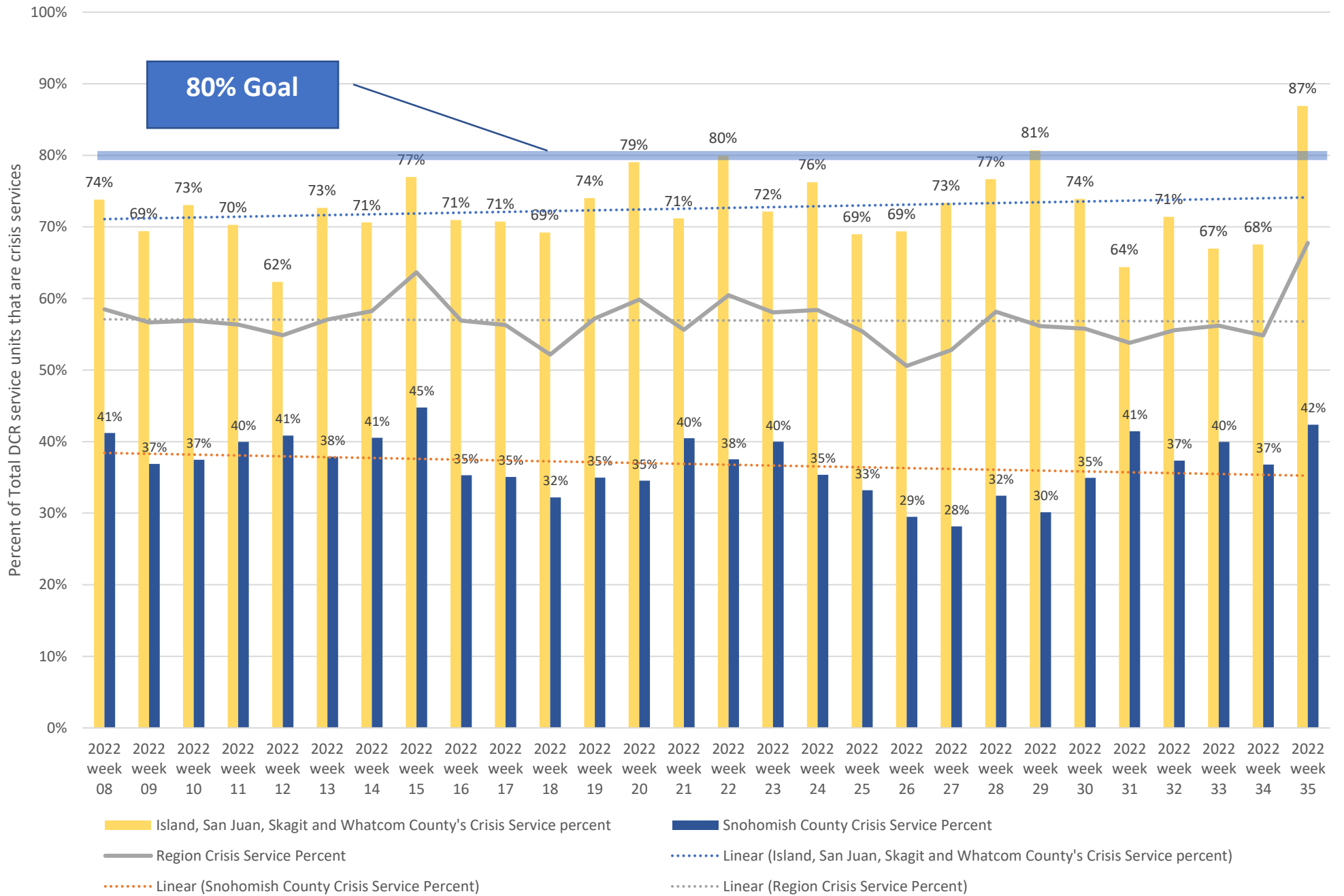


	2022 week 21	2022 week 22	2022 week 23	2022 week 24	2022 week 25	2022 week 26	2022 week 27	2022 week 28	2022 week 29	2022 week 30	2022 week 31	2022 week 32	2022 week 33	2022 week 34	2022 week 35
Pierce EandT TELECARE								1							
Cascade Behavioral Hospital LLC	1														
Multicare Behavioral Health Inpatient Services - Auburn															1
OVERLAKE HOSPITAL MEDICAL CENTER								1							
THURSTON/MASON EandT FACILITY														1	
ABHS Chehalis						1					1				1
American Behavioral Health Systems SSI								1					3		
Swedish Mill Creek									1			1		1	2
VALLEY GENERAL HOSPITAL	1		1			1				1	1			1	
Mukilteo		1		1	1	2	1	2	1			2			
Telecare North Sound Evaluation and Treatment	2	1	2	3	2	1	1	1			1	2	1	2	
BHC Fairfax Hospital INC	2	5		5	3	2	4	2	4		1	1	1	1	4
SMOKEY POINT BEHAVIORAL HOSPITAL	3	4	5	3	3	1	2	2	8	6	1	3	2	1	2
Skagit Valley Hospital	3	4	3	6	8	3	3	2	3	5	7	5	7	5	2
Peacehealth Bellingham	4	6	10	6	9	7	5	6	6	6	6	6	6	6	2
SWEDISH EDMONDS	2	6	8	5	8	10	10	3	4	9	8	9	9	7	3
Providence Everett	13	19	12	18	15	24	22	19	21	16	19	17	15	16	8

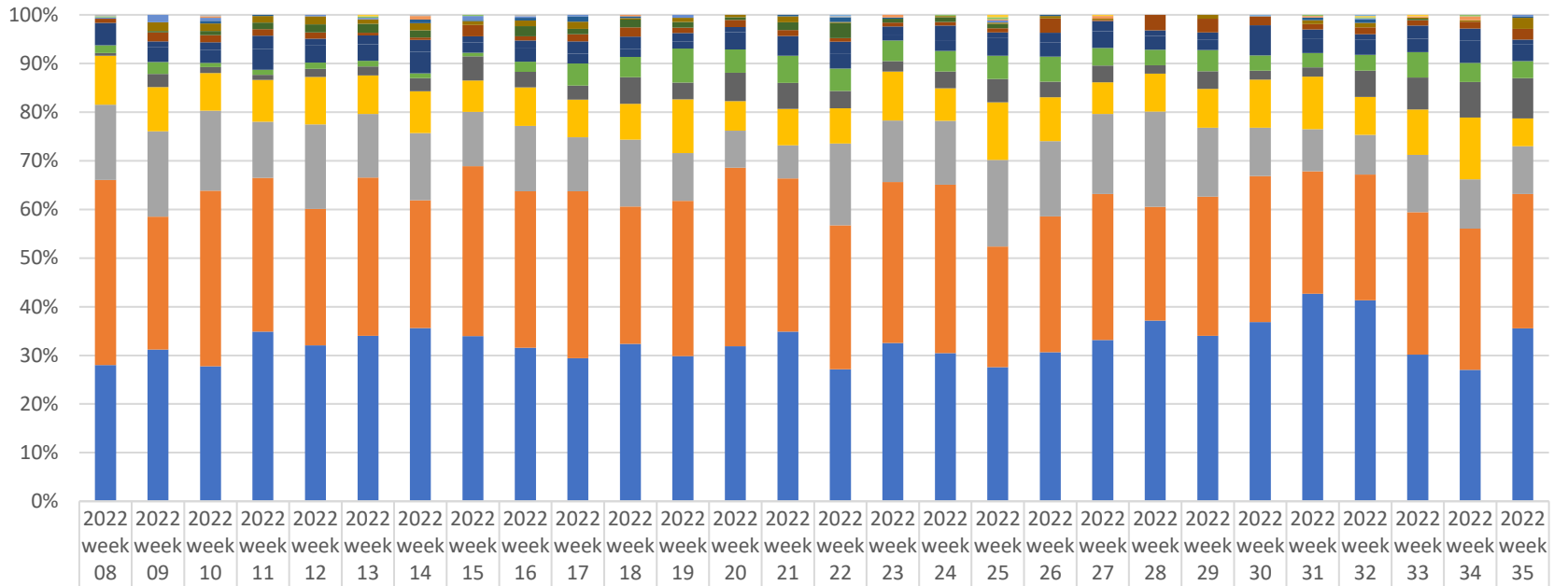
Telehealth only, crisis and investigation services from 02/13/22 to 08/27/22



Crisis Service Unit Percent - Crisis Service units divided by Crisis units + Investigation units

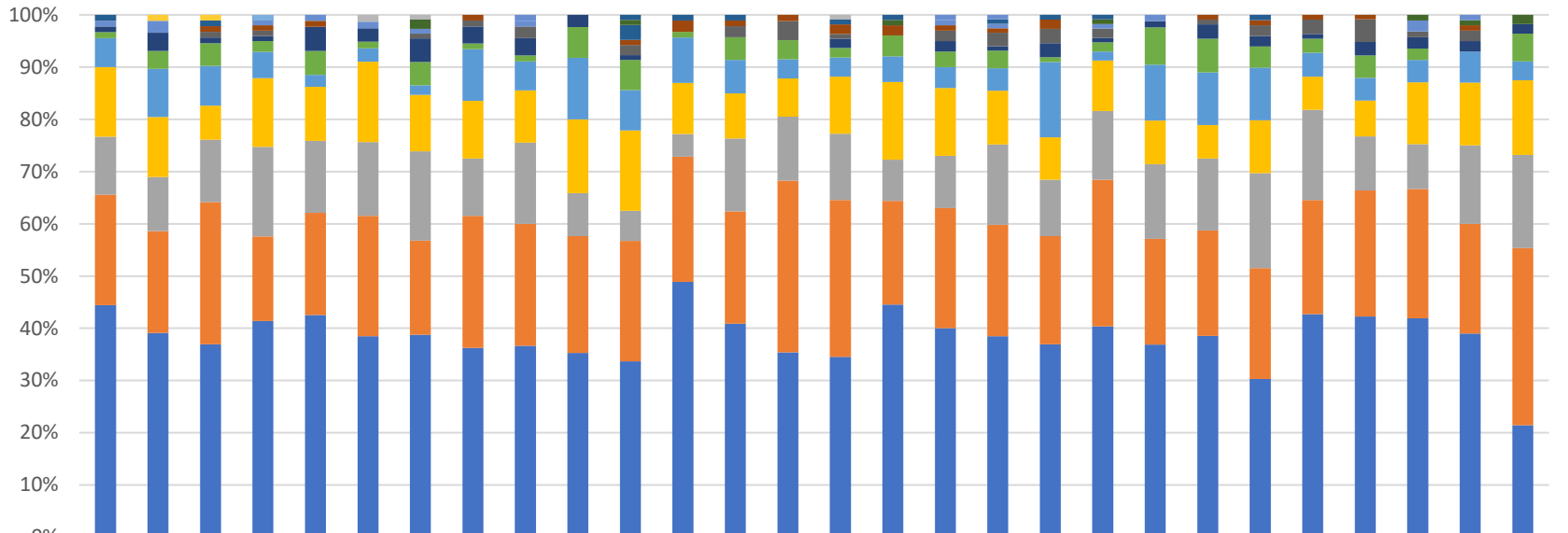


Place of Service -Crisis Services, percent of total by week



	2022 week 08	2022 week 09	2022 week 10	2022 week 11	2022 week 12	2022 week 13	2022 week 14	2022 week 15	2022 week 16	2022 week 17	2022 week 18	2022 week 19	2022 week 20	2022 week 21	2022 week 22	2022 week 23	2022 week 24	2022 week 25	2022 week 26	2022 week 27	2022 week 28	2022 week 29	2022 week 30	2022 week 31	2022 week 32	2022 week 33	2022 week 34	2022 week 35
Custodial Care Facility															1								1		1			
Community Mental Health Center	1		1				1		1						1								1		1			
Skilled Nursing Facility						1												2		1					1	1		
Nursing Facility	1					1		1								1	2							1	1		1	
Psych. Residential			1				3				1					2		1		2				1		1	3	
On Campus Outpatient Hospital	1	5	2		1	1		3	1	1		2						2							1			1
Group Home			2	1			3	1	2	4	1			1	4	1			1					2	3			1
Homeless Shelter		6	5	5	5	3	6	3	4	5	1	3	2	4	1		1	1	2	1		3		3	4	1	1	7
School		1	3	5	5	6	6		7	4	5	4	2	5	13	3	4	4								1		
Inpatient Hospital	3	6	5	5	4	2	2	9	3	5	6	4	6	4	3	3	3	4	12	1	11	11	6	4	6	4	5	7
Inpatient Psychiatric Facility	9	4	5	10	4	6	10	5	5	9	8	6	4	4	10	7	12	5	8	8	4	6	6	7	5	10	9	3
Prison Correctional Facility	8	10	9	16	11	11	18	8	10	7	5	5	14	9	13	4	9	16	12	13	10	8	14	11	13	10	16	11
Telehealth	6	8	3	4	4	4	4	3	7	16	13	24	19	18	19	16	17	21	21	14	11	17	10	11	14	19	14	11
Assisted Living Facility	2	9	4	4	5	6	11	19	11	10	17	12	23	17	15	8	14	21	13	13	6	14	6	7	23	24	26	26
Emergency Room Hospital	37	30	26	32	30	26	35	25	27	27	23	38	24	24	30	38	27	52	37	25	27	31	32	40	33	34	45	18
Home	57	58	55	43	53	43	56	43	46	39	43	34	30	22	70	48	53	78	63	63	68	55	32	32	35	43	36	31
Other Place of Service	140	90	121	118	86	107	107	135	110	120	88	110	145	101	123	125	140	109	114	115	81	111	97	93	110	107	103	87
Office	103	103	93	130	98	112	145	131	108	103	101	103	126	112	113	123	123	121	125	127	129	132	119	158	176	110	96	112

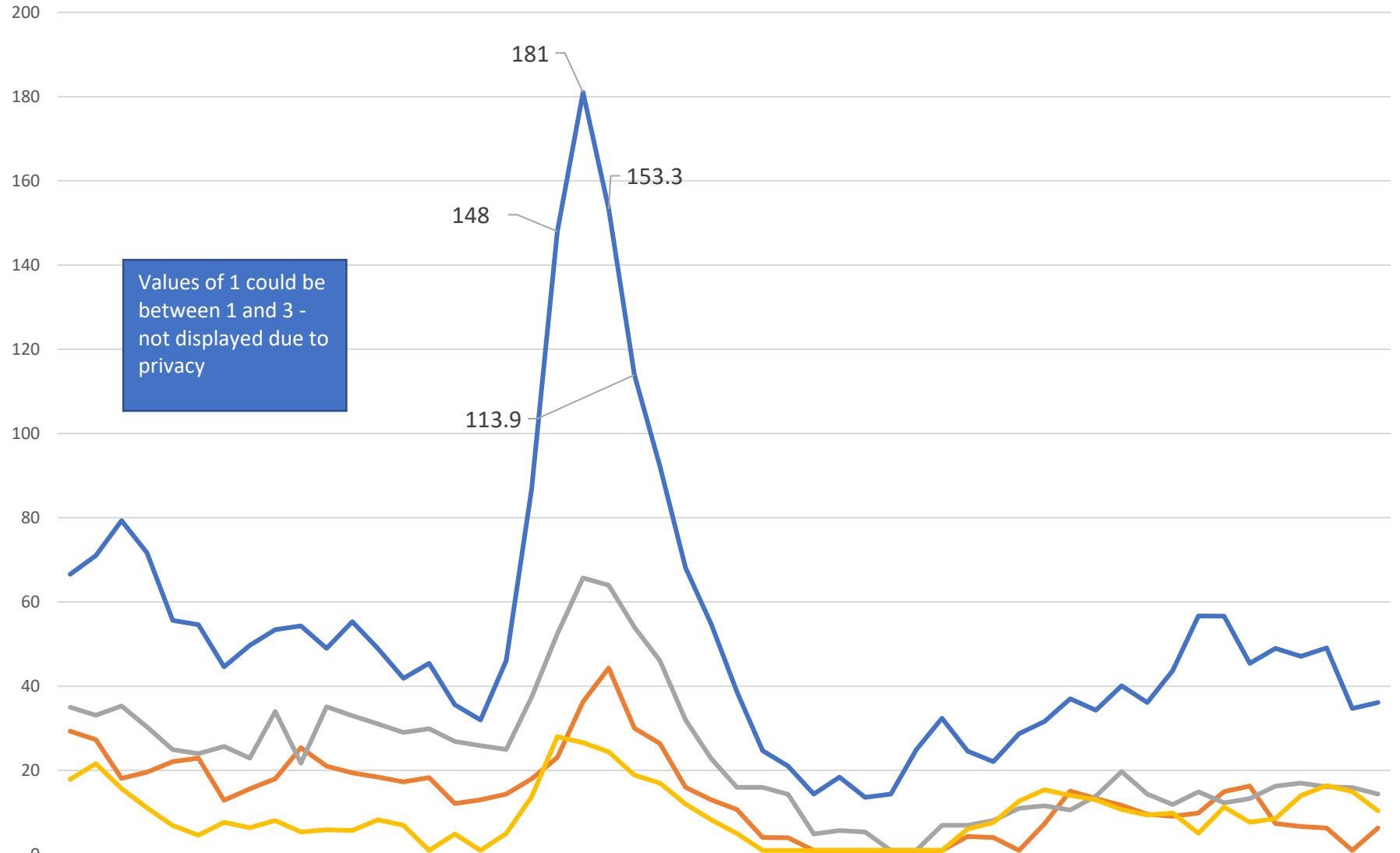
Place of Service -Investigations, percent of total by week



2022 week 08	2022 week 09	2022 week 10	2022 week 11	2022 week 12	2022 week 13	2022 week 14	2022 week 15	2022 week 16	2022 week 17	2022 week 18	2022 week 19	2022 week 20	2022 week 21	2022 week 22	2022 week 23	2022 week 24	2022 week 25	2022 week 26	2022 week 27	2022 week 28	2022 week 29	2022 week 30	2022 week 31	2022 week 32	2022 week 33	2022 week 34	2022 week 35
--------------	--------------	--------------	--------------	--------------	--------------	--------------	--------------	--------------	--------------	--------------	--------------	--------------	--------------	--------------	--------------	--------------	--------------	--------------	--------------	--------------	--------------	--------------	--------------	--------------	--------------	--------------	--------------

Residential SUD				1																								
On Campus Outpatient Hospital		1	1																									
School						1	1							1														
Skilled Nursing Facility										1					1					1								
Homeless Shelter								1								1	1									1		
Psych. Residential							2			1					1				1						1	1	1	1
Community Mental Health Center	1		1							3	1	1		1			1	1				1						
Telehealth	1	2		1	1	1	1		1							1	1			1	1					2		
Group Home			1	1	1			1			1	2	1	1	2	2	1	1	2				1	1	1	1		1
Assisted Living Facility			1	1			1	1	2		2		2	3	1		2	3	3	2		1	2	3	5	1	2	
Home	1	3	1	1	4	2	5	3	3	2	1							2		2	1	3	1	1	3	2	2	1
Office	1	3	4	2	4	1	5	1	1	5	6	1	4	3	2	4	3	4	1	2	6	7	4	3	5	2		3
Inpatient Hospital	5	8	7	5	2	2	2	9	5	10	8	8	6	3	4	5	4	5	16	2	9	11	10	5	5	4	6	2
Inpatient Psychiatric Facility	12	10	6	13	9	12	12	10	9	12	16	9	8	6	12	15	13	12	9	11	7	7	10	7	8	11	12	8
Prison Correctional Facility	10	9	11	17	12	11	19	10	14	7	6	4	13	10	14	8	10	18	12	15	12	15	18	19	12	8	15	10
Other Place of Service	19	17	25	16	17	18	20	23	21	19	24	22	20	27	33	20	23	25	23	32	17	22	21	24	28	23	21	19
Emergency Room Hospital	40	34	34	41	37	30	43	33	33	30	35	45	38	29	38	45	40	45	41	46	31	42	30	47	49	39	39	12

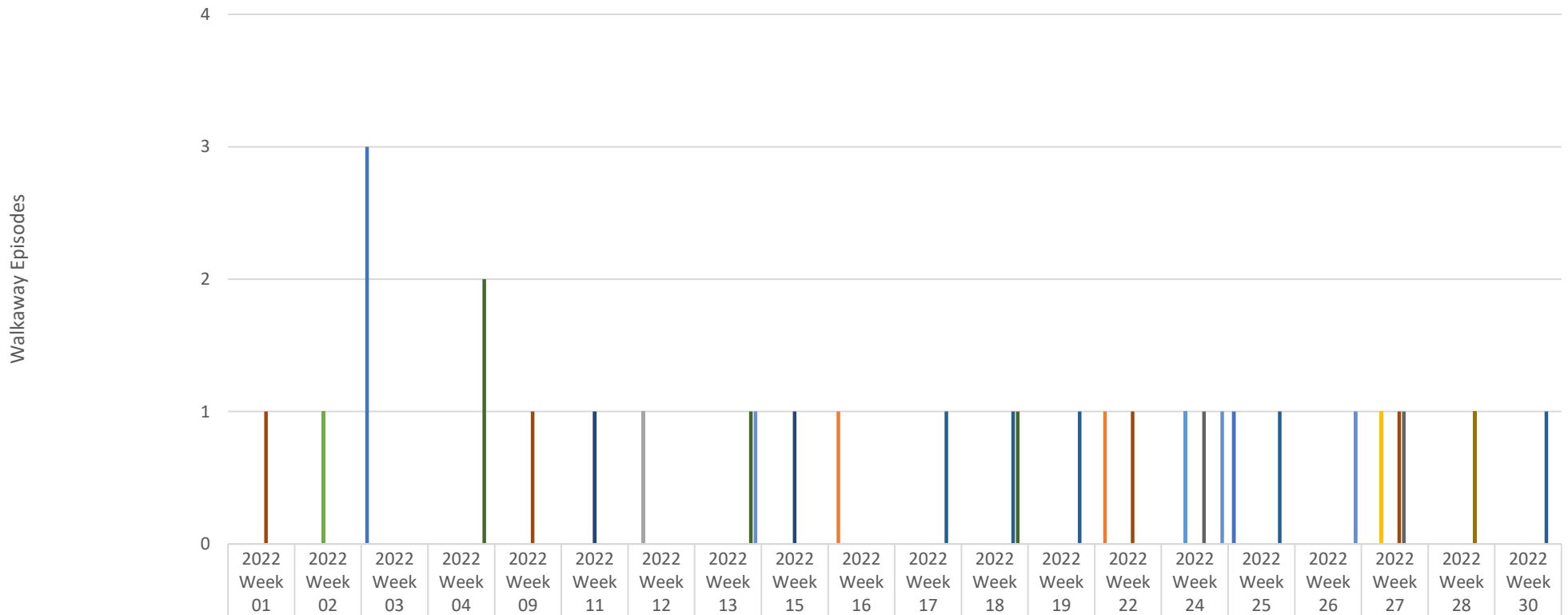
Total Hospitalized Adults - COVID-19 (confirmed or suspected) 7 day average



Values of 1 could be between 1 and 3 - not displayed due to privacy

	8/27/21	9/3/21	9/10/21	9/17/21	9/24/21	10/1/21	10/8/21	10/15/21	10/22/21	10/29/21	11/5/21	11/12/21	11/19/21	11/26/21	12/3/21	12/10/21	12/17/21	12/24/21	12/31/21	1/7/22	1/14/22	1/21/22	1/28/22	2/4/22	2/11/22	2/18/22	2/25/22	3/4/22	3/11/22	3/18/22	3/25/22	4/1/22	4/8/22	4/15/22	4/22/22	4/29/22	5/6/22	5/13/22	5/20/22	5/27/22	6/3/22	6/10/22	6/17/22	6/24/22	7/1/22	7/8/22	7/15/22	7/22/22	7/29/22	8/5/22	8/12/22	8/19/22	
Prov. Everett	67	71	79	72	56	55	45	50	53	54	49	55	49	42	45	36	32	46	87	148	181	153	114	92	68	55	39	25	21	14	18	14	14	25	32	25	22	29	32	37	34	40	36	44	57	57	45	49	47	49	35	36	
SVH	29	27	18	20	22	23	13	16	18	25	21	19	18	17	18	12	13	14	18	23	36	44	30	26	16	13	11	4.1	4	1	1	1	1	1	1	1	4.3	4.1	1	7.3	15	13	12	9.6	9.1	9.9	15	16	7.4	6.7	6.3	1	6.3
ST Joe	35	33	35	30	25	24	26	23	34	22	35	33	31	29	30	27	26	25	37	52	66	64	54	46	32	23	16	16	14	4.9	5.7	5.4	1	1	1	7	7	8.1	11	12	11	14	20	14	12	15	12	13	16	17	16	16	14
Swedish Edmonds	18	22	16	11	6.9	4.6	7.7	6.4	8.1	5.4	5.9	5.7	8.3	7	1	4.9	1	5	14	28	27	24	19	17	12	8.3	5	1	1	1	1	1	1	1	1	6.1	7.6	13	15	14	13	11	9.4	9.9	5.1	11	7.7	8.6	14	16	15	10	

North Sound BH ASO Walkaway Chart 02/13/22 to 08/27/22



■ Cascade Valley Hospital			3												1				
■ Island Hospital								1						1					
■ Olympic Medical Center							1												
■ Peace Island Health																		1	
■ Providence															1				
■ Providence - Colby		1																	
■ Skagit Valley						1			1										
■ St. Joseph	1							1							1				1
■ Swedish Edmonds															1				1
■ Swedish Mill Creek																			1
■ United General											1	1	1			1			
■ Whidbey Health				2					1				1						
■ Whidbey Health ED								1							1		1		